

Virginia Jackson Design Competition 2026

The International Textile Alliance Design Award was established in 1995. In 1997 it was renamed to honor the late Virginia Jackson. The Virginia Jackson Design Competition recognizes the most talented students in the field of textile design and creates a vehicle to bring new talent into the design industry.



“My goal has been to be an educator and creative force in color and design direction for our industry. It is important to nurture, foster, and introduce new ideas and talents to the American home fashions scene.”

When the International Textile Association launched the student design competition, Virginia Jackson was very instrumental in establishing the core fundamentals, which continue to play a major role in the program.

Submitted designs are to be created for residential upholstery applications in Dobby, Jacquard, and Print categories.

GUIDELINES FOR VIRGINIA JACKSON DESIGN COMPETITION

DESIGN CLASSIFICATIONS

I. PRINTS (ROTARY)

CATEGORY I – Single Major Print Pattern

Layout Specifications: A 27" x 27" fabric sample is required.

Design repeat sizes may be any of the following:

- **13.5" x 13.5"** (side-by-side repeat)
- **13.5" x 6.75"** (half-drop repeat)
- **27" x 27"** (side-by-side repeat)
- **13.5" x 27"** (half-drop repeat)

A mirrored or flip repeat is also acceptable as long as the total dimension of repeat is either 13.5" or 27" total.

II. WOVEN (JACQUARD)

CATEGORY II – Single Major Woven Jacquard

Layout Specifications: A 27" x 27" fabric sample is required.

Design repeat sizes may be any of the following:

- **13.5" x 13.5"** (side-by-side repeat)
- **13.5" x 6.75"** (half-drop repeat)
- **27" x 27"** (side-by-side repeat)
- **13.5" x 27"** (half-drop repeat)

A mirrored or flip repeat is also acceptable as long as the total dimension of repeat is either 13.5" or 27" total.

III. WOVEN (DOBBY)

CATEGORY III – Single Major Woven Dobby

Layout Specifications: A minimum of 13.5" of fabric is required.

Design repeat sizes may be **any size that repeats within 13.5"**.

In creating your designs, keep in mind the visual concept of where the designs will fit on furniture; based on the industry standard of a maximum 27" pattern repeat.

Be aware of current trends in color and design for home furnishings, as well as the hand of the textile; all play a major role in judging.

*Note: Points are taken away from designs that are not in repeat, scratchy to the touch, have a design theme not suitable for interior use, are too flimsy to be upholstered, impossible to sew or take on the form of a cushion.

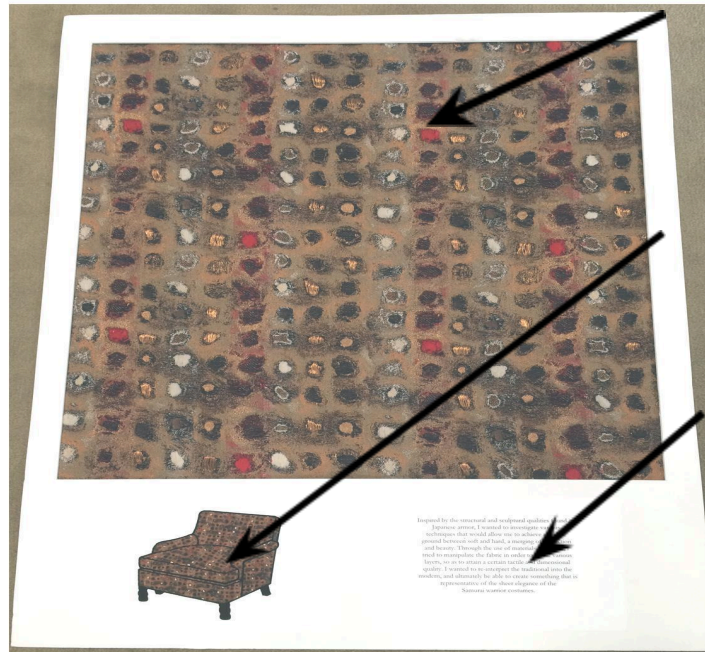
ENTRY – STUDENT INFORMATION

All entries must be submitted by and be the work of students currently registered for courses in the textile design schools or departments of approved accredited universities or colleges.

Each entry should have the following information included and meet the following criteria:

- The design - entry can be artwork (for prints only), printed fabric, or woven fabric (for jacquard and dobby entries).
- The design applied to a sketch of a piece of furniture. This will illustrate the application of the design in practical usage and an understanding of the design placement upon the furniture. Be sure the design motif is applied to the furniture in its proper scale relationship of fabric to frame.
- An image of the design in repeat if it is not included elsewhere.
- Overall size of entries should be 27" x 27" excluding mat, one "major pattern" per board; dobby entries to be no smaller than a 13 1/2" x 13 1/2".
- A statement of inspiration for the design should be included on the board.
- Entries must be mounted on white foam board, not to exceed 30" x 40". The front of the design board **must** be covered with protective acetate or equivalent leaving access to work for judges to examine weave structure and hand. Remember that judges need to touch the textile, so **do not completely tape up the protective cover**. Please attach acetate or protective covering at the top of the board only with clear tape (no pins please).
- Please print and include the [entry form 2026](#) in an unsealed envelope attached to the back of the board along with the required contribution of \$25 per entry. **The entry form must be completed online.** A copy of your entry form will be emailed to you once submitted. **A required contribution to the ITA Educational Foundation is necessary, \$25 per entry. Please make checks payable to ITA Educational Foundation.**

Example of Presentation Board



THE DESIGN

THE DESIGN APPLIED TO
A PIECE OF FURNITURE

STATEMENT OF
INSPIRATION

ENTRY- SCHOOL REQUIREMENT

Each school may submit entries for each category. Entries can be artwork, woven or printed fabric. *While there is no limit to the number of entries submitted by the school, individual students may only submit one entry per category.*

Entries must be in the ITA office no later than **March 26, 2026**.

ITA shipping address: International Textile Alliance
Virginia Jackson Design Competition
305 West High Avenue, MS-533
High Point, NC 27260

JUDGING

Judging will take place during High Point Market on April 25-29, 2026. Entries will be judged by the Executive Design Committee composed of Design Consultants, Print Design Directors, Woven Design Directors, and ITA Board Members.

Judging is based on four categories: Creative Concept, Furniture Application, Color, and Applicability to Other Home Furnishings.

If the entries are not of suitable standards, ITA judges can deem there is no winner for a category. Entrants not following all rules may be subject to disqualification.

In the event of a tie, the Chair of the Executive Design Committee will determine the tiebreaker.

Monetary Award for each of the 3 categories:

- ❖ First Place Winner: \$1,000.00 for student and \$1,000.00 for the school
- ❖ Second Place Winner: \$500.00
- ❖ Honorable Mention: \$250.00

The physical entry for the winning design in each category will become property of the ITA Educational Foundation. The intellectual property rights will be retained by the student. Any of the designs may, at the discretion of ITA, be displayed at ITA Interwoven following the selection. Non-winning entries will be removed from the display board and returned to the school address. Print entries submitted as artwork will not be returned.

ITA assumes no liability for loss or damage to any entry, and all contestants waive any claims against ITA.